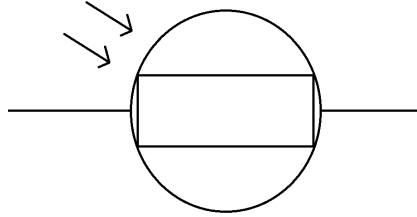


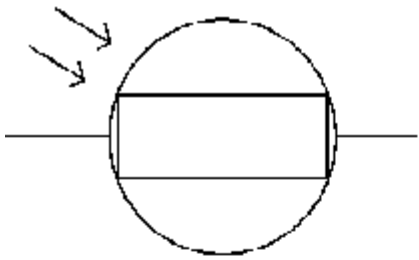
Making a Circuit with an LDR.

This is the symbol for an LDR:

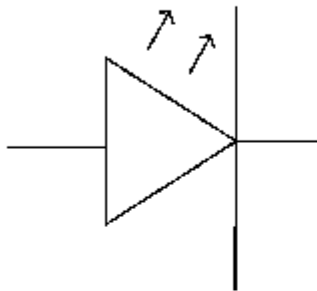


Can you make a circuit so that an LED lights up when the circuit is somewhere bright?
Draw your circuit below:

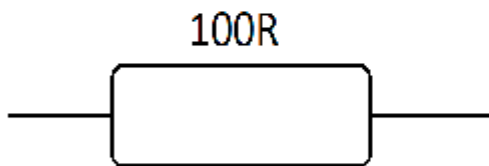
Can you match the component symbols to their names?



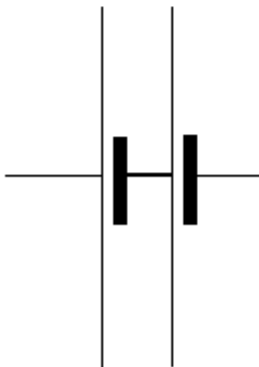
Resistor



Battery



LDR



LED

Look at the symbol for the LDR. Which other symbol is similar to it?

Can you guess what LDR stands for?